



TOPTIROL
das appartement

www.top-tirol.com

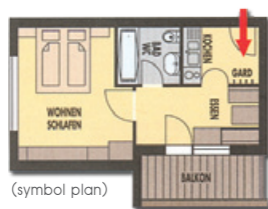
price information winter 10/11 · summer 11

apartment I

for 2-3 persons, about 30 m²

2-room-flat:

vestibule with wardrobe, kitchenette, living room with dining table and tiled stove, bedroom with double and single bed, bathroom with bathtub or shower and WC, balcony, radio, satellite TV, telephone, W-LAN, safe



(symbol plan)

WINTER 2010/2011				SUMMER 11
DAILY PRICES	DAILY PRICES	DAILY PRICES	DAILY PRICES	DAILY PRICES
09.10. - 25.12.	22.01. - 29.01.	01.01. - 08.01.	25.12. - 01.01.	11.06. - 09.07
08.01. - 22.01.	12.03. - 26.03.	29.01. - 12.03.		13.08. - 08.10.
26.03. - 16.04.	16.04. - 23.04.			54,-
23.04. - 30.04.				09.07. - 13.08.
72,-	78,-	88,-	108,-	66,-

Price for 2 persons; for each further person see addition

WINTER 2010/2011				SUMMER 11
DAILY PRICES	DAILY PRICES	DAILY PRICES	DAILY PRICES	DAILY PRICES
09.10. - 25.12.	22.01. - 29.01.	01.01. - 08.01.	25.12. - 01.01.	11.06. - 09.07
08.01. - 22.01.	12.03. - 26.03.	29.01. - 12.03.		13.08. - 08.10.
26.03. - 16.04.	16.04. - 23.04.			88,-
23.04. - 30.04.				09.07. - 13.08.
136,-	148,-	168,-	208,-	112,-

Price for 4 persons; for each further person see addition

(symbol plan)



apartment III

for 4-6 persons, about 42 m²

3-room-flat:

kitchenette with dishwasher and microwave, bed-/living room with dining table, tiled stove and double bed couch, bedroom with double bed, bedroom with bunk bed, bathroom with bathtub or shower and WC, balcony, radio, satellite TV, telephone, W-LAN, safe

apartment VI

for 2-4 persons, about 37 m²

2-room-flat:

vestibule with wardrobe, kitchenette with microwave, bed-/living room with dining table, tiled stove and double bed couch, bedroom with double bed, bathroom with bathtub or shower and WC, partially balcony, radio, satellite TV, telephone, W-LAN, safe



(symbol plan)

WINTER 2010/2011				SUMMER 11
DAILY PRICES	DAILY PRICES	DAILY PRICES	DAILY PRICES	DAILY PRICES
09.10. - 25.12.	22.01. - 29.01.	01.01. - 08.01.	25.12. - 01.01.	11.06. - 09.07
08.01. - 22.01.	12.03. - 26.03.	29.01. - 12.03.		13.08. - 08.10.
26.03. - 16.04.	16.04. - 23.04.			60,-
23.04. - 30.04.				09.07. - 13.08.
78,-	84,-	94,-	114,-	72,-

Price for 2 persons; for each further person see addition

WINTER 2010/2011				SUMMER 11
DAILY PRICES	DAILY PRICES	DAILY PRICES	DAILY PRICES	DAILY PRICES
09.10. - 25.12.	22.01. - 29.01.	01.01. - 08.01.	25.12. - 01.01.	11.06. - 09.07
08.01. - 22.01.	12.03. - 26.03.	29.01. - 12.03.		13.08. - 08.10.
26.03. - 16.04.	16.04. - 23.04.			104,-
23.04. - 30.04.				09.07. - 13.08.
152,-	164,-	184,-	224,-	128,-

Price for 4 persons; for each further person see addition



(symbol plan)

apartment IV

for 4-7 persons, about 72 m²

3-room-flat:

vestibule with wardrobe, kitchenette with dishwasher, bed-/living room with dining table, tiled stove and double bed couch and single bed, 2 bedrooms with double bed, bathroom with bathtub, shower and WC, 2nd WC separate, balcony, radio, satellite TV, telephone, W-LAN, safe

apartment II

for 2-5 persons, about 44 m²

2-room-flat:

vestibule with wardrobe, kitchenette with dishwasher, bed-/living room with dining table, tiled stove, partially with double bed couch and single bed, bedroom with double bed, bathroom with bathtub and WC, partially 2nd WC separate, balcony, radio, satellite TV, telephone, W-LAN, safe



(symbol plan)

WINTER 2010/2011				SUMMER 11
DAILY PRICES	DAILY PRICES	DAILY PRICES	DAILY PRICES	DAILY PRICES
09.10. - 25.12.	22.01. - 29.01.	01.01. - 08.01.	25.12. - 01.01.	11.06. - 09.07
08.01. - 22.01.	12.03. - 26.03.	29.01. - 12.03.		13.08. - 08.10.
26.03. - 16.04.	16.04. - 23.04.			66,-
23.04. - 30.04.				09.07. - 13.08.
84,-	90,-	100,-	120,-	78,-

Price for 2 persons; for each further person see addition

WINTER 2010/2011				SUMMER 11
DAILY PRICES	DAILY PRICES	DAILY PRICES	DAILY PRICES	DAILY PRICES
09.10. - 25.12.	22.01. - 29.01.	01.01. - 08.01.	25.12. - 01.01.	11.06. - 09.07
08.01. - 22.01.	12.03. - 26.03.	29.01. - 12.03.		13.08. - 08.10.
26.03. - 16.04.	16.04. - 23.04.			120,-
23.04. - 30.04.				09.07. - 13.08.
168,-	180,-	200,-	240,-	144,-

Price for 4 persons; for each further person see addition



(symbol plan)

apartment V

for 4-6 persons, about 83 m²

3-room-flat:

vestibule with wardrobe, kitchenette with dishwasher, bed-/living room with dining table, tiled stove and couch, 2 bedrooms with double bed, 2 bathrooms with bathtub and/or shower and WC, balcony, radio, satellite TV, telephone, W-LAN, safe

- ADDITION IN WINTER:
 - 0-2 years: free, 2-9 years: 17,-/day, up to 9 years: 25,-/day
- ADDITION IN SUMMER:
 - 0-2 years: free, 2-9 years: 10,-/day, up to 9 years: 11,-/day
- PRICES: in €, excl. local tax

- LOCAL TAX WINTER: 1,60 day/person older than 14 years
- LOCAL TAX SUMMER: 1,30 day/person older than 14 years
- SHORT STAY: For a stay shorter than 5 days we have to charge 12,- per person for final cleaning.
- CHECK IN: starting from 03.00 pm / CHECK OUT: until 10.00 am
- PETS: on demand 8,- per day, no pets allowed on south/west side

THE BREAD BASKET, OUR SPECIAL „GOOD-MORNING-SERVICE“
... oven-fresh bread and pastry from our in-house bakery (free of charge)!

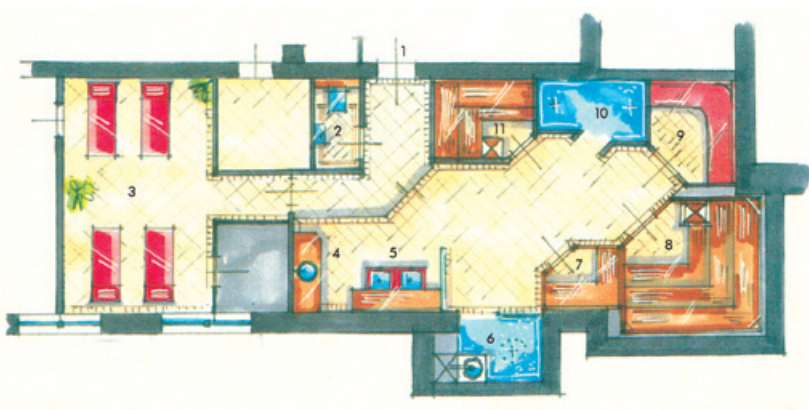


wellness, everything that's good for you ...

300 m² relaxation and recreation in the top tirol oasis of comfort

WELLNESS AREA

With love for every detail we have created a world of relaxation and recreation for you and your well being. The silence and the pleasant warmth invite to stay and relax. Get new energy and take time for the nice things in life.



- | | |
|---------------------------------|--------------------------|
| 1. access wellness area | 7. infrared-cabin |
| 2. toilet | 8. finnish sauna |
| 3. relax room (with water beds) | 9. salt water steam bath |
| 4. vitamin bar | 10. cleaning showers |
| 5. feet-whirlpool | 11. bio-sauna |
| 6. ice grotto with ice well | |

ADVENTURE-INDOOR SWIMMING POOL

with massage nozzles, waterfall, counter-flow-system, relaxation gallery

water temperature 30° to 31° C – open daily from 8 am

TEPIDARIUM

Through the homogeneous radiation climate a deep relaxation and intensive regeneration phase occur.



Please note, that we do not accept credit cards.

Bank account: Raiffeisenbank Längenfeld, Konto 38190, BLZ 36268 · IBAN: AT87 3626 8000 0003 8190 · SWIFT: RZTIAT 22268

TOP TIROL APARTEMENT · Family Fiegl · Huben 120 · A-6444 Längenfeld/Ötztal

Mobile +43 (0) 664 3508656 · Phone +43 (0) 5253 5069 · Fax +43 (0) 5253 5069-6

Mail: info@top-tirol.com · www.top-tirol.com